

What is the Crex Camp?

Established in 1996, the Crex Meadows Youth Conservation Camp offers high school students a positive learning experience where youth develop valuable work-related skills and a connection with the environment.



The camp, located in the Crex Meadows Wildlife Area in Grantsburg, WI, serves at-risk, economically disadvantaged youth and youth with special education needs residing in the ten northwest counties in Wisconsin.


Each summer, campers work with the Wisconsin Department of Natural Resources on conservation related projects in and around Crex Meadows. The work can be both challenging and physically demanding but youth are rewarded with a sense of accomplishment, new friendships and career skills all while earning a paycheck for their effort.

Camp is not all work and no play. Daily curriculum focused on the basic skill development and the environment is designed to be academically challenging but also engaging and fun. Each evening, recreation time encourages campers to unwind after the day's work. Campers also participate in weekend field trips which offer a variety of activities including: horseback riding, high ropes courses, canoeing, tent camping, campfires and s'mores.



Crex Meadows Youth Conservation Camp

Northwest Wisconsin CEP, Inc.
Attn: Camp Director
422 3rd Street West, Suite 200
Ashland, WI 54806
www.nwcep.org
1-888-780-4237 • 1-715-682-9141

 /CrexMeadowsYouthConservationCamp



Northwest Wisconsin Concentrated Employment Program, Inc.
(CEP, Inc.) is an Equal Opportunity Employer/Program.



Serving Youth, Serving Nature



What Campers have to Say!

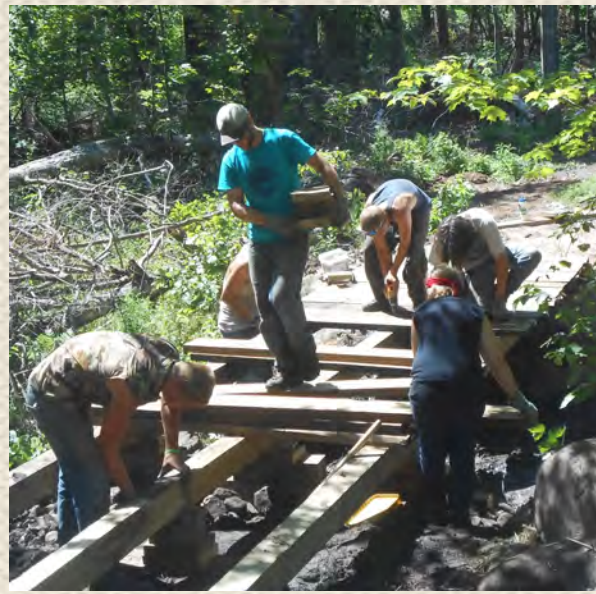


"I learned new work skills and how I can do things if I set my mind to it. I should think more confidently about myself. Also the counselors helped me recognize my abilities and they made me stronger!"

"What I learned at Crex is that you need to show responsibility and if you work it's always worth it afterwards and everyone is an equal person no matter what they look like and I feel so good that I came here."



"Meeting new and interesting campers taught me a lot about how to interact with different types of people. I learned a lot about communication and discipline from this session."



Crex Camp = Work Experience

Regular workday outside

Native seed harvesting and planting

Exotic species removal

Fence removal and prairie restoration

Canada Geese banding

Hiking trail construction and maintenance



How Campers Benefit

Youth earn valuable lessons in goal setting, team building, leadership development and work readiness skills through curriculum and work activities as well as during workshops, field trips and recreation time at camp. Campers earn minimum wage for the hours they work as well as credit towards high school graduation for participating in daily curriculum. Curriculum includes:

- Career exploration and assessments
- Communication activities and public speaking
- Water usage and health testing and analysis
- Native plant and animal identification
- Orienteering and wilderness skills
- Studies in geology, forestry and conservation practices



At camp, youth have the opportunity to "get away from it all." With limited access to cellphones, TVs and internet access, the rustic camp facilities benefit campers by encouraging them to rely on basic communication skills to build meaningful, long-lasting friendships with their coworkers.

What does it cost? CEP, Inc. is able to provide sponsorship for eligible campers at \$1,500 per camper through multiple funding sources including federal, state, foundations, grants and private donations. Each two-week session includes lodging, meals, a camp T-shirt and water bottle, work supplies including leather work boots, gloves and additional safety equipment as needed. To learn more about camper eligibility or to become a sponsor, please visit our website or call the toll-free number listed on the back of the brochure.